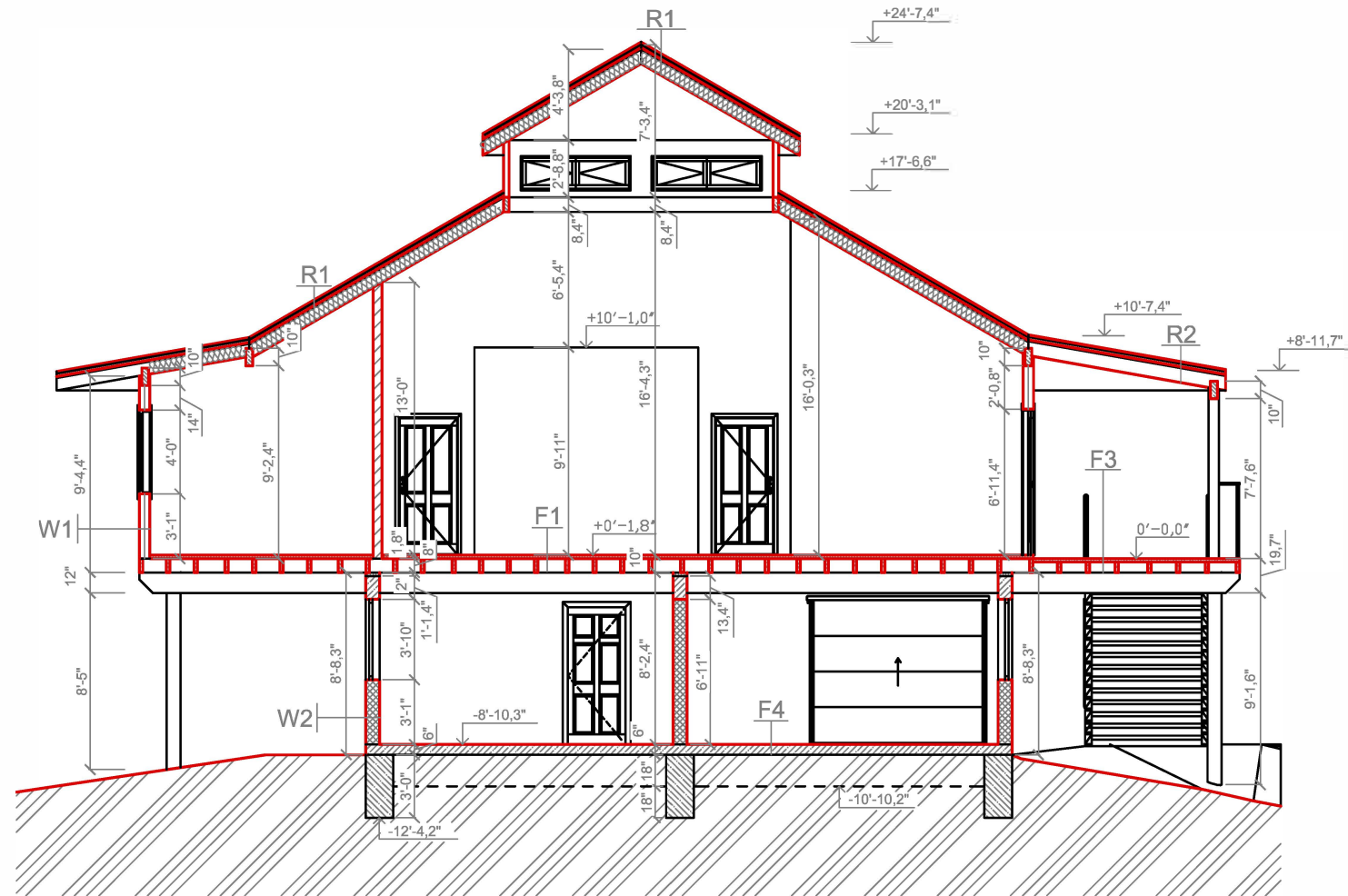


FLOOR, WALL AND ROOF CONSTRUCTION



F1 | FIRST FLOOR CONSTRUCTION

- WOODEN FLOOR 1x6 1 inch
- HEAT ISOLATION + ALUMINIUM 0,2 inch
- PLAINWOOD 0,8 inch
- WOOD CONSTRUCTION - 2x8 8 inch

F3 | FIRST FLOOR - DECK CONSTRUCTION

- WOODEN FLOOR 2x6 2 inch
- WOOD CONSTRUCTION - 2x6 6 inch

F4 | BASEMENT FLOOR CONSTRUCTION

- REINFORCED CONCRETE SLAB 6 inch
- SOIL

W1 | EXTERIOR WALL (FROM INSIDE)

- SHEATROCK 0,5 inch
- HEAT ISOLATION FIBREGLASS 4 inch
- WOOD CONSTRUCTION - 2x4
- WATER ISOLATION
- WOOD SIDING - 1x6 1 inch

W2 | BASEMENT EXTERIOR WALL (FROM INSIDE)

- PLASTER + PAINT 1 inch
- FACEBLOCKS 8 inch
- PLASTER + PAINT 1 inch







R1 | ROOF (FROM OUTSIDE)

- ASPHALT SHINGLE 0,2 inch
- WOODEN BOARDS 2 inch
- WATER ISOLATION
- HEAT ISOLATION - FIBREGLASS 4 inch
- SHEATROCK 0,5 inch

R2 | ROOF ABOVE TERRACE (FROM OUTSIDE)

- ASPHALT SHINGLE 0,2 inch
- WOODEN BOARDS 2 inch

MATERIALS LEGEND:

-  PURE CONCRETE (LITÝ BETON)
-  REINFORCED CONCRETE (ŽELEZOVÝ BETON)
-  WOOD SANDWICH CONSTRUCTION (DŘEVĚNÁ SENDVIČOVÁ KONSTRUKCE)
-  FACE BLOKS (BETONOVÉ TVÁRNICE)
-  WOOD (DŘEVO)
-  FIBREGLASS ISOLATION (TEP. IZOLACE STŘECHY)

ROATAN, BAY ISLANDS, HONDURAS

Czech Village

Czech Village, Lote number 1



MADE BY:

DATE

05/2012

INVESTOR:

SCALE

1:100

DRAW. NO

6

SECTION B-B